

**ORFÚ - PÉCS**  
**10th - 15th August 2015**



**22nd European Foresters'  
Orienteering  
Championships**



**STIHL®**

# EFOL - 22nd European Foresters' Orienteering Championships

*Dear Orienteering Sports Partners!*

*Let me kindly invite you to the picturesque Orfű in Mecsek this summer, where we are organizing the 22nd European Foresters' Orienteering Championships jointly with The Hungarian Forestry Association and "Orienteering-Pécs" Foundation between August 10 and 15. More than 400 competitors will participate in the long tradition forester championships from 13 different countries.*

*The five-day event contains traditional events, like a forestry workshop, a field trip and a banquet, in addition to the sprint, middle distance, and relay races.*

*We're waiting for applicants from the fields of forestry, wood industry and conservation, as well as colleagues of educational and research institutions related to these professions -- both active and retired -- along with subcontractors, other private forest owners, forestry education individuals, and their respective closest family members to participate.*

*There will be an open category too where anyone is welcome to enter the competitions without constraints.*

*Mr. László Keszi CEO Mecsekerdő Forestry Co. Ltd.*

Organizers: Hungarian Forestry Association, Mecsekerdő FORESTRY Co. Ltd., „Orienteering-Pécs” Foundation

Main Patrons: Sándor Fazekas, Dr., Minister of Rural Development

Organizing committee :

President: László Keszi

Vice president: Endre Kiss, Dr.

Secretary: Tamás Kocsis  
Péter Vonyó

Event coordinators:  
Péter Brúnó Horváth

Course setters:

sprint: Balázs Gyenizse-Nagy

middle: András Kersity

relay: Gábor Pataki

Event controllers:

sprint: Gábor Turcsán

middle: Gyula Kóger

relay: György Pavlovics, ifj. Dr.

Board and lodging: András Bojcsev,  
Adrienn Vass

Registration: Milán Kiss

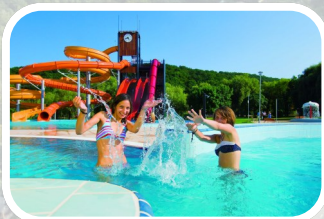
Protocol: Réka Palka

Public Relation: Tünde Kis

## EVENT CENTER

H-7677 Orfű Széchenyi tér 1.

In 2015, EFOL is going to take place in Hungary, in the settlement of Orfű situated in the heart of Mountain Mecsek, only 15 km from Pécs. The charm of the settlement lays mainly in its natural potentials. The three artificial lakes called Lake Orfű, Lake Pécs and Lake Ottó Hermann surrounded by mountains assure a perfect location for the lovers of water sports, fishing, hunting, horse-and bike riding and spelunking. Additionally bathing, an Aqua Park, programs and music festivals make the experience of this beautiful settlement complete.



The city of Pécs with its special Mediterranean microclimate is only a 20 minutes drive by car. The more than 2000 years old city with its marks of several folk groups became the European capital of Culture in 2010. It is well known of its rich, sparkling cultural-technological life, its university, museums and monuments which are part of the UNESCO World Heritage. Its festivals, various open-air programs and the buzzing crowd on the streets of the city center provide a real Mediterranean feeling.

ARRIVAL by car: from Budapest to Pécs on Motorway M6/M60, then on Highway 6 until the junction to Orfű and 14 km through Mountain Mecsek

by public transport: from Budapest to Pécs by bus or train and from Pécs to Orfű by coach commuting several times a day.

## PROGRAM

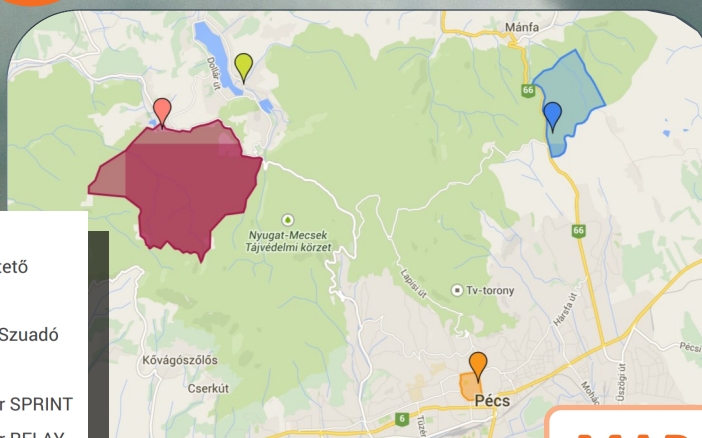
August 2015	10. Monday	11. Tuesday	12. Wednesday	13. Thursday	14. Friday	15. Saturday
forenoon				Middle-distance Competition, Orfű - Abaliget Karstic region	Excursions with presentation of local forestry	Relay Competition, Pécs-Árpádtető
afternoon	Arrival and registration	Arrival and registration	Terrain preview			Sprint Competition City of Pécs
evening					Opening Ceremony, City of Pécs Széchenyi square	Prize giving ceremony
			Prize giving ceremony	Prize giving ceremony		
		Team Leader's Meeting	Forestry seminars	Banquet	Annual EFOL meeting	

## CATEGORIES

**Sprint and middle distance:** W/M12, W/M14, W/M16, W/M18, W/M20, W/M 21, W/M35, W/M40, W/M45, W/M50, W/M55, W/M60, W/M65, W/M70, F75 and Open category

**Relay:** W/M14, W/M18, W/M 21, W/M35, W/M45, W/M55, FW/M 65, M20, M75 and Open category

In case of less than 3 entrants, classes

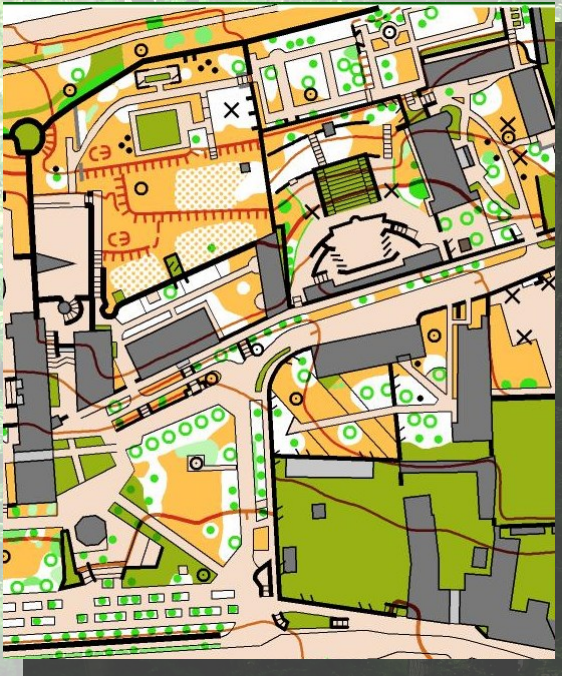


- Sprint city of Pécs
- Relay - Map Árpádtető
- Middle-distance - Map Szuadó
- Event Center
- Competition Center SPRINT
- Competition Center RELAY
- Competition Center MIDDLE

## MAP

# TERRAIN

## SPRINT, Pécs



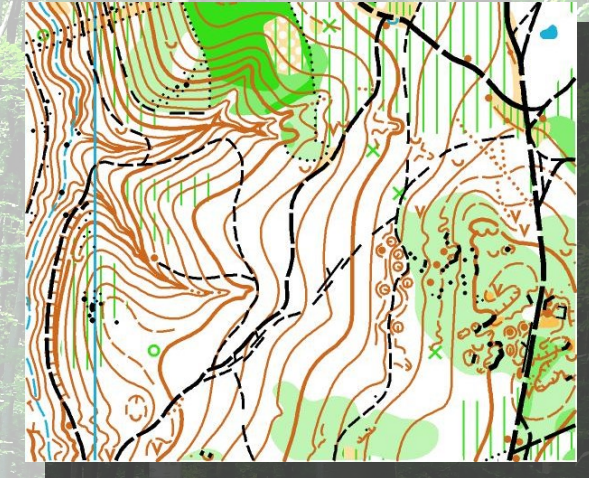
The race takes place within the old city walls of Pécs. This is a typical urban terrain with moderate slopes. This is the location where in 2011 WMOC was organized.

## MIDDLE, Abaliget



This is one of the famous terrains of Mountain Mecsek. The terrain is located between 220m and 410m above sea level. There are many pits and dolines, some of them may be 25m deep. The mainly mix beech and oak forests provide

## RELAY, Pécs-Árpádtető



The competition terrain is typical of the Mountain Mecsek, located between 300m and 430m above sea level. The deciduous forests provide middle and good conditions for running.

**MAPS:** Surveyed in 2015. Map scale 1:10000 with 5m contour interval on the forest courses and 1:4000 / 2,5m on the sprint

**TIME KEEPING SYSTEM:** During the event SI time-keeping system will be used. Please submit your SI

### START TIMES

- Sprint 14:00
- Middle-distance 10:00
- Relay 09:00

# REGISTRATION

Registration only over the teamleaders of your country.

ENTRY: [www.mecsekerdo.hu/entries](http://www.mecsekerdo.hu/entries)

	Adult	Children under age 14
Participation fee	53 EUR	Free
Banquet	20 EUR	16 EUR
Excursion	20 EUR	16 EUR
<b>EFOL Guest</b>	<b>10 EUR / 1 race</b>	<b>10 EUR / 1 race</b>

Registration must be made before: 31st May 2015

Payment must be made before: 30th June 2015

## entitlement in EFOL-GUEST CATEGORIES:

Orienteering participants, who are not entitled EFOL participants, could register and run in any class which fits to their gender and age. Start for guest race will be after the EFOL race. Guests results will not be rewarded by the jury as EFOL results.

## entitlement in EFOL OFFICIAL CATEGORIES:

We're waiting for applicants from the fields of forestry, wood industry and conservation, as well as colleagues of educational and research institutions related to these professions - both active and retired - along with subcontractors, other private forest owners, forestry education individuals, and their respective closest family members to participate.



Make your choice of Orfű varied accommodation options - campsite or well-equipped 3 stars apartments. Experience the hospitality of the local people, their service quality and visit us again!

Please note that the 2015 EFOL event will be held during the main tourist season. Therefore, we cannot guarantee any kind of accommodation after the 31st of May 2015. Please make your reservation as soon as possible. The

price you find on our website includes the cost of the accommodation and the obligatory tourist tax.

Catering (eg.: breakfast and dinner) is not provided at the apartments. In case you require meals please check the Board option in our website. Travel insurance: the organizers of the competition wouldn't provide insurance for the participants. By us there is a possibility to get your insurance here.

**[YOU CAN MAKE RESERVATION ON THIS LINK:](#)**

## Breakfast buffet:

two kinds of high-quality cold cuts, butter, two kinds of cheese, eggs, milk, tea, "NATURALÉ" fruit juice, water, jam, honey, tomato, pepper, bread

Breakfast: **adult – 7 EUR; children – 5 EUR**

## Dinner catering: dinner buffet

Dinner price: **adult – 15 EUR; children– 11 EUR**

Banquet dinner (Thursday) price :

**[YOU CAN CHECK THE WHOLE MENU ON THIS LINK:](#)**

**[www.mecsekerdo.hu/food-catering](http://www.mecsekerdo.hu/food-catering)**



# FOOD&CATERING



# SEMINARS & EXCURSIONS

## A. ZSELIC

Participants will discover the largest deer farm in Hungary in the morning. The lunch will be served at the Kikerics forest school. After visiting a 200 years old primary forest in Sasrét, the group will travel with the forestry railway to Almamellék. The final program of the day will be the visit to the monuments of the Hungarian - Turkish Friendship park.

## B. WEST-MECSEK

The group will visit the Pannonpower biomass energy plant near the city, and the 4th century early Christian burial sites which are part of the Unesco World Heritage. After lunch at the forestry school, a presentation will take place in Sás-valley about the potential role of continuous cover forestry.

## C. EAST-MECSEK

You will have an opportunity to visit the famous Zsolnay Factory and participate on a tour. After seeing the cultural district of Pécs, the group will go to the Eastern-Mecsek for a 6,4 km hike.

Topics of the hike:

1st stop: Lackeri forest: Continuous cover forestry in sub-mountain beech forest region.

2nd stop: Cigányhegyi viewtower: Gamekeeping, tourism and landscape protection.

3rd stop: Kisújbánya: The history of glass production in the region. Lunch and beverages before the walk

## D. DRAVA PLAIN

The most popular tree species of the Dráva-plain is the pedunculate oak. This tree produces durable heartwood which always have high price on the market. That is the reason why this species is planted for forestry in the region. The traditional forest management techniques are being replaced with sustainable forest handling and this creates a difficult situation knowing the needs of the oak. The professionals in this area have a tradition of finding new, better ways and solutions. During the day the group will go on a boat tour on the Dráva River which will be followed by a presentation about the local forest management. Lunch will be served before the wine-tasting in a local winecellar at Palkonya. Number of participants for the programme

# EFOL 2015

[www.mecsekerdo.hu/efol2015](http://www.mecsekerdo.hu/efol2015)

**WE ARE LOOKING  
FORWARD TO  
SEEING YOU IN  
HUNGARY!**



**SPECIAL THANKS TO:**

**STIHL**®



Local Government  
of Baranya County



Brewery of  
Pécs



Municipality  
of Pécs



Municipality  
of Orfű



Municipality of  
Abaliget



DUNAKER Kft.



National Food Chain  
Safety Office



OTP Bank



ZSOLNAY  
PORCELÁNMANUFAKTURA RT.

Zsolnay Porcelain

**GERE**  
GERE ATTILA PINCSÉZETE

Gere Attila  
Winery